

ENDANGERED SPECIES, MAY 2015

MAUI COUNTY, HI

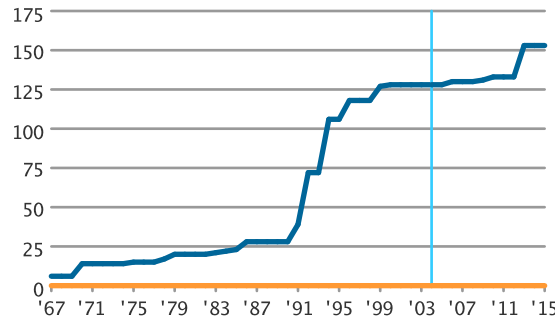
ENDANGERED AND THREATENED SPECIES LISTINGS, MAY 2015

1967-MAY 2015

LISTINGS —
DELISTINGS —
2004 |

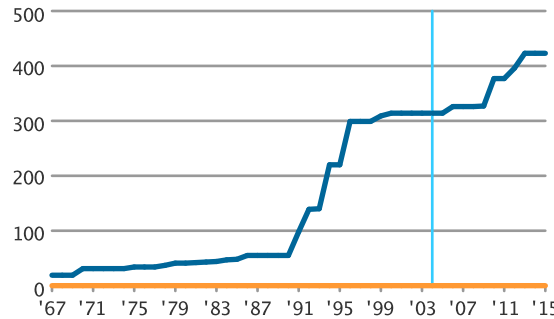
COUNTY

153



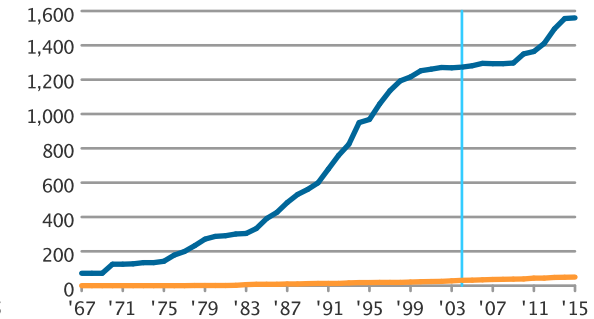
STATE

423



NATIONAL

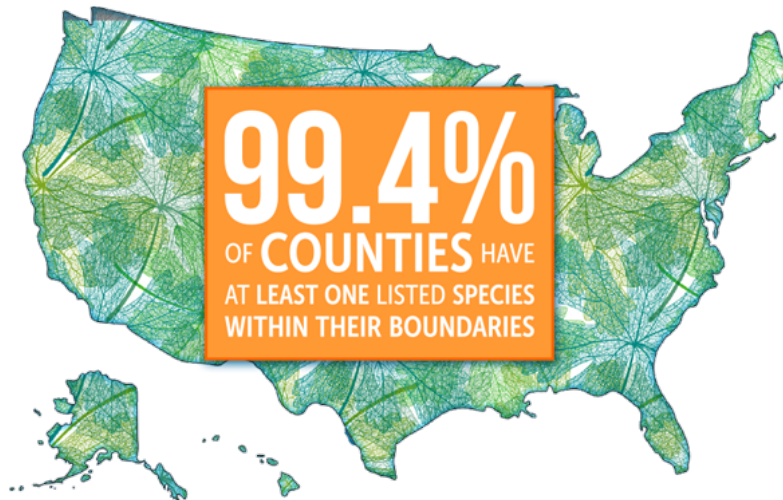
1,560



COUNTY ENDANGERED AND THREATENED SPECIES LISTINGS, MAY 2015

COUNTY POPULATION, 2014: 163,019	ENDANGERED SPECIES LISTINGS, 2015	148
	THREATENED SPECIES LISTINGS, 2015	5
	NEW LISTINGS OF ENDANGERED AND THREATENED SPECIES, 2004-2015	25
	DELISTINGS OF ENDANGERED AND THREATENED SPECIES, 2004-2015	0

DEFINITION OF TERMS: (Data Source: U.S. Fish and Wildlife Service, as of May 2015)
The Number of Endangered and Threatened Species includes species classified as Endangered, Threatened and Threatened due to Similarity of Appearance. **Endangered:** Species in danger of extinction throughout all or a significant portion of its range. **Threatened:** Species likely to become endangered within the foreseeable future throughout all or a significant portion of its range. NACo analysis considered experimental non-essential populations of endangered species as "threatened", because FWS treats them as threatened species on public land. **Threatened due to Similarity of Appearance:** Species not biologically endangered or threatened, but considered "threatened" due to similarity of appearance with another species with "threatened" status.



QUESTIONS

Dr. Emilia Istrate, Research Director
research@naco.org

LEGISLATIVE CONTACT

Chris Marklund, Associate Legislative Director
202.942.4207 | cmarklund@naco.org

MEDIA CONTACT

Brian Namey, Director of Communications
202.942.4220 | bnamey@naco.org